

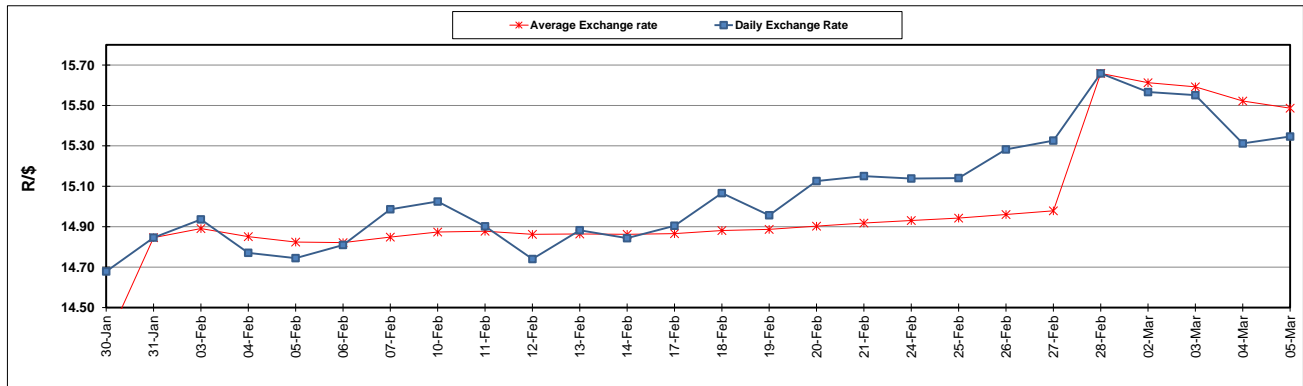
	PETROL 95 ULP	PETROL 93 ULP & LRP	DIESEL 0.05%	DIESEL 0.005%	ILL. PAR.
GAUTENG PUMP PRICE (SA c/l) AS FROM 04/03/2020	1,584.000	1,552.000	-	-	-
WHOLESALE PRICE (SA c/l) AS FROM 04/03/2020	-	-	1,403.260	1,408.660	856.728
SINGLE NATIONAL MAXIMUM RETAIL PRICE	-	-	-	-	1,085.000
BASIC FUEL PRICE - 05/03/2020 (SA c/l)	619.521	607.883	626.870	630.914	608.714
PRESS RELEASE CONTRIBUTION TO BFP 04/03/2020 - 05/03/2020 (SA c/l)	667.970	645.970	683.630	689.030	666.128
UNIT OVER/(UNDER) RECOVERY - 05/03/2020 (SA c/l)	48.449	38.087	56.760	58.116	57.414
AVERAGE BASIC FUEL PRICE 28/02/2020 - 05/03/2020	617.581	605.414	639.447	643.669	619.008
AVERAGE UNIT OVER/(UNDER) RECOVERY 28/02/2020 - 05/03/2020	61.789	51.956	76.583	77.761	87.920

ANALYSIS MOVEMENT OF AVERAGE OVER/(UNDER) RECOVERY

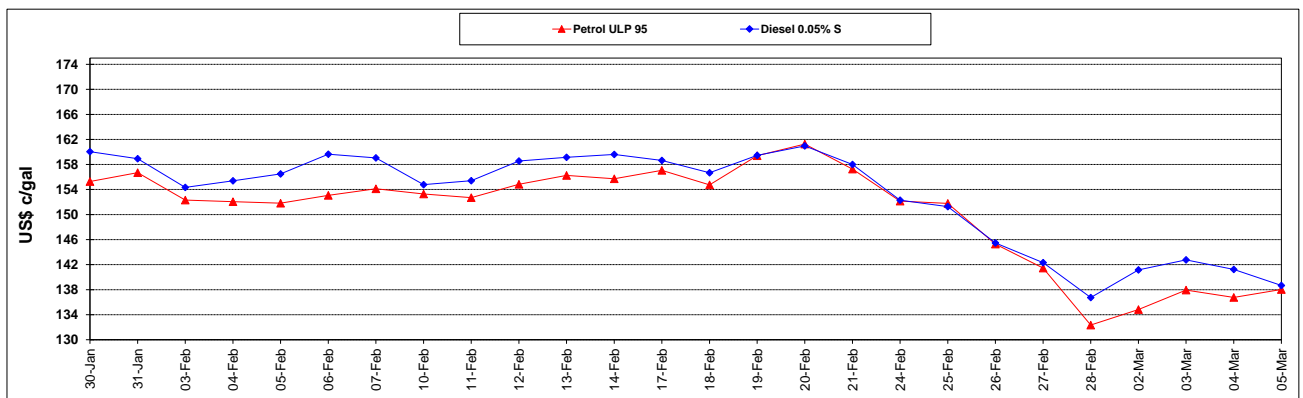
	PETROL 95	PETROL 93	DIESEL 0.05%	DIESEL 0.005%	ILL. PAR.
- MOVEMENT IN INTERNATIONAL PRODUCT PRICES	82.043	71.811	97.554	98.871	108.221
- MOVEMENT IN EXCHANGE RATE	(20.254)	(19.855)	(20.971)	(21.110)	(20.301)
AVERAGE UNIT OVER/(UNDER) RECOVERY 28/02/2020 - 05/03/2020	61.789	51.956	76.583	77.761	87.920

R/\$ EXCHANGE RATE - (R/\$ 15.3462 - 05/03/2020)

EXCHANGE RATE USED IN BASIC FUEL PRICE



INTERNATIONAL PRODUCT PRICES OF BASKET USED IN BASIC FUEL PRICE



BASIC FUEL PRICE IN SA CENTS PER LITRE

